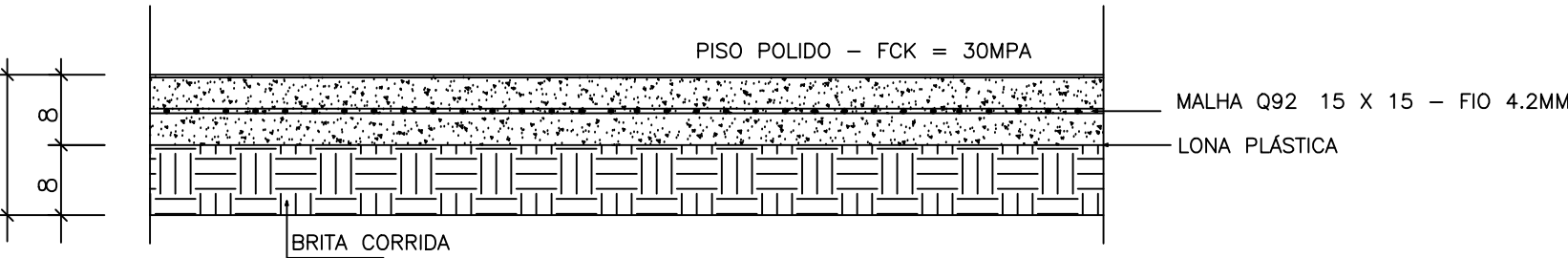


ESTRUTURAL – FUNDAÇÃO

Esc: 1/100

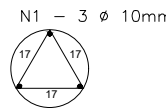
DETALHE DO PISO
sem escala.



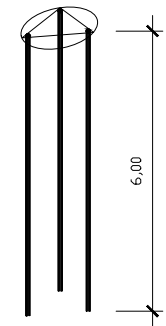
MALHA Q92 15X15 - FIO 4,2	m ²	kg/m ²	kg/m ² + 10%
	640,0	1,48	1041,92 m ²
VOLUME DE CONCRETO – 51,20 M3			
VOLUME BRITA – 51,2 M3			
ÁREA DE FORMA PARA PISO : 10,4 M ²			

ESTACA HÉLICE CONTINUA – BR1 ø30 (28x)

ESTACA TIPO PERFURATRIZ

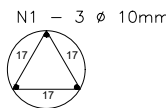


ESTRIBO N2 ø 5mm C/ 15cm – comp.: 55cm
DIÂMETRO DA BROCA ø 30cm

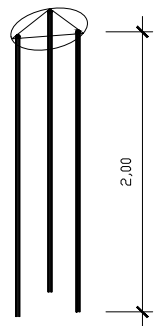


PROFUNDIDADE DE 6 METROS – FERRAGEM
PROFUNDIDADE DE 12 METROS – ESCAVAÇÃO
VOLUME CONCRETO – 30 MPA : 23,75 M3

BROCA A TRADO MECANIZADO – BR2 ø30 (8x)

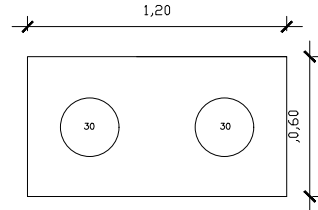


ESTRIBO N2 ø 5mm C/ 15cm – comp.: 55cm
DIÂMETRO DA BROCA ø 30cm



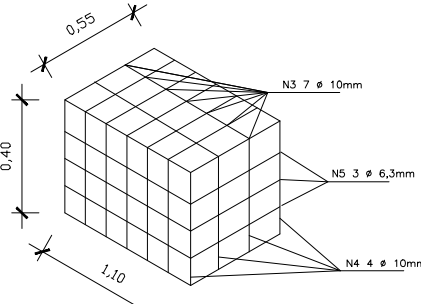
PROFUNDIDADE DE 2 METROS – FERRAGEM
PROFUNDIDADE DE 2 METROS – ESCAVAÇÃO
VOLUME CONCRETO – 30 MPA : 1,13 M3

BLOCO ACABADO (14x)



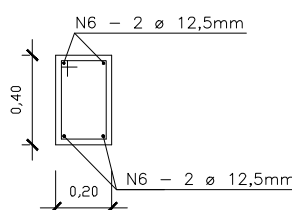
VOLUME DE CONCRETO – 20MPA: 5,04m3
ÁREA DE FORMA: 25,20 M²

DETALHE ARMAÇÃO BLOCO
sem escala



DETALHE VIGA BALDRAME – VB1

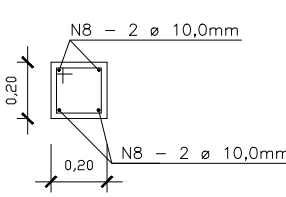
sem escala.



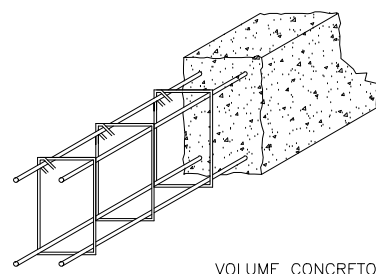
ESTRIBO N7 C/ 15cm ø 5,0mm – comp.: 130cm

DETALHE VIGA BALDRAME – VB2

sem escala.

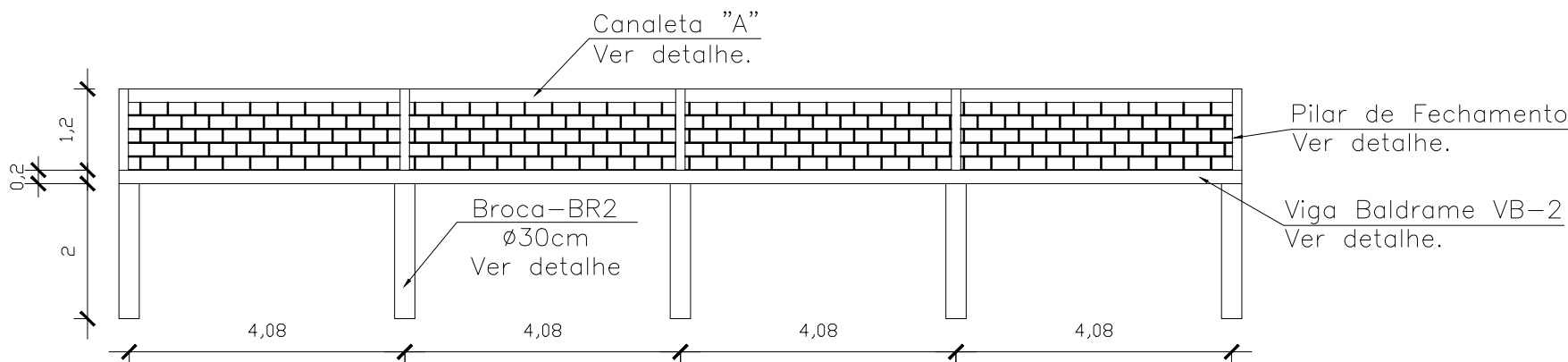


ESTRIBO N9 C/ 15cm ø 5,0mm – comp.: 70cm

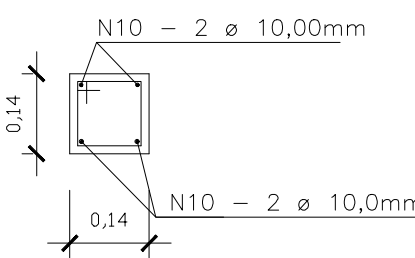


VOLUME CONCRETO – FCK 20 MPA : 5,12M3
ÁREA DE FORMA : 51,20 M²

DETALHE DO FECHAMENTO
esc:sem escala.

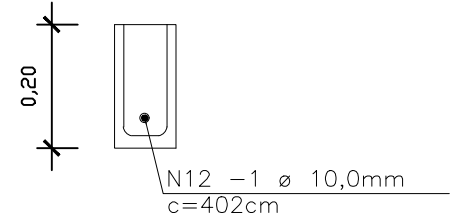


PILAR DE FECHAMENTO = H=1,2M
sem escala.



ESTRIBO N11 C/ 15cm ø 5,0mm – comp.: 60cm

DETALHE DA CANALETA "A"
sem escala



LISTA DE FERROS

N	Ø	Q	COMPRIMENTO		PESO(kg)
			UNIT.(M)	TOTAL (M)	
01	10 mm	84	6,0	504	310,97
		24	2,0	48	29,62
02	5mm	1120	0,55	616	94,86
		107	0,55	58,85	9,04
03	10 mm	98	2,30	225,40	139,07
04	10 mm	56	3,70	207,20	127,84
05	6,3mm	42	3,80	159,60	39,10
06	12,5 mm	08	32	256	246,53
07	5mm	427	1,30	554,10	85,49
08	10 mm	08	20	160	98,72
09	5 mm	267	0,70	186,70	28,75
10	10 mm	32	1,20	38,4	23,69
11	5 mm	64	0,60	38,4	5,91
12	10 mm	1	105	105	64,79

RESUMO DE AÇO

Ø	COMPRIMENTO (m)	PESO(kg)
5mm	1454,05	223,92
6,3mm	159,60	39,10
10 mm	1288	794,70
12,5 mm	256	246,53
TOTAL		1304,25 kg